

PLAN AHEAD

It's important if you live, work and travel in this area to plan what you will do if a bushfire threatens.



About Venus Bay

The Venus Bay Township is in a residential/ coastal setting with its boundaries defined by Cape Liptrap Coastal Park, Andersons Inlet and Evergreen Road.

Significant features of the area are Point Smythe, Cape Liptrap Coastal Park, Andersons Inlet and Bass Strait surf beaches.

This community information forms part of Venus Bay's overall Township Protection Planning and includes a map containing key elements such as Venus Bay's bushfire risk rating and designated Neighbourhood Safer Places – Places of Last Resort (where available).

Important community bushfire safety information and details for information sources are also included that will assist residents and visitors to make informed decisions and survive a bushfire.



PREPARE. ACT. SURVIVE.

FireReady

Community Fire Awareness Information

PREPARE · ACT · SURVIVE

Your survival is paramount

- Understand **your** risk and seek more information
- Ensure **you** know what **you** will do and where **you** will go in case of bushfire
- Plan to leave early and have a back-up plan if **your** original plan fails
- Leaving late is dangerous and could be fatal.

IMPORTANT EMERGENCY CONTACT INFORMATION

Emergency Information

Emergency Broadcasters: SkyNews TV, ABC 828 AM, 3GG 531 AM, Star 94.3 FM, ABC 100.7 FM

Road closures www.vicroads.vic.gov.au

Park closures – Parks Victoria hotline **131 963**

State Forest closures (DSE) **136 186**

Bushfire Information

Victorian Bushfire Information Line **1800 240 667**

CFA website www.cfa.vic.gov.au

DSE website www.dse.vic.gov.au

Further Information

Planned Burning www.dse.vic.gov.au

CFA District 9 – Warragul Office **(03) 5623 1180**

South Gippsland Shire **(03) 5662 9200**

Bureau of Meteorology (BoM) www.bom.gov.au

Welfare advice – Dept of Human Services www.dhs.vic.gov.au/emergency

South Gippsland Shire www.southgippsland.vic.gov.au

Emergency Alert www.emergencyalert.gov.au

IN EMERGENCY DIAL 000 (TTY 106)

Do not call Triple Zero for information or advice. Calling Triple Zero unnecessarily may put others who are in a genuine emergency situation at risk.

Prepare

UNDERSTAND **YOUR** BUSHFIRE RISK

- Venus Bay and surrounding districts have been assessed as having an Extreme bushfire risk
- This assessment takes into account factors such as the local terrain, vegetation, access in and out of the township and bushfire history
- The [Household Bushfire Self-assessment Tool](#) is available to help individuals assess the bushfire risk on their own property
- **Please note areas outside the township may be at equal or higher risk from bushfire**
- You may not always receive an official warning about a bushfire
- Do not expect a fire truck at your property.

REDUCE **YOUR** BUSHFIRE RISK

- Understand your risk by attending [community information](#) sessions such as [FireReady meetings](#), [Community Fireguard](#) and [Bushfire Planning Workshops](#)
- Prepare your property and make a household [Bushfire Survival Plan](#)
- Visit the CFA website or contact the Victorian Bushfire Information Line or CFA district office for information on bushfire-related meetings or to obtain a [FireReady Kit](#).

DEVELOP **YOUR** BUSHFIRE PLAN

- Write down and practise your [Bushfire Survival Plan](#)
- Visit the CFA website or contact your CFA district office for more information on developing a plan for high risk days and assessing bushfire risk at your [property](#).

STAY IN TOUCH **BEFORE** AND **DURING** A FIRE

- Tune in to your local radio station and [CFA website](#) on days of higher fire danger ratings as the most reliable way of staying informed. Have a battery-powered radio available in case of power outage
- Mobile phone coverage in and around Venus Bay is generally good, but may not be accessible during times of emergency
- Beware, cordless home phones will NOT work if the mains power supply is cut
- There are no community alerting sirens operating in this township
- Remain alert, regularly go outside to check for signs of danger.



Act

Being well away from the area is the **best** course of action for survival.

ACTIVATE
YOUR BUSHFIRE
SURVIVAL PLAN
EARLY

Survive

LEAVE EARLY

- Monitor the Fire Danger Rating daily during summer
- On days of fire risk, know where you will go to survive
- Leaving a high risk bushfire area early, before a fire starts is always the safest option
- A bushfire can happen without warning, so you must be prepared
- It is safer to leave early if you have children, elderly or vulnerable people in the home
- On Code Red days, it is safer to leave the night before or early in the morning.

Venus Bay is in the West & South Gippsland Total Fire Ban District

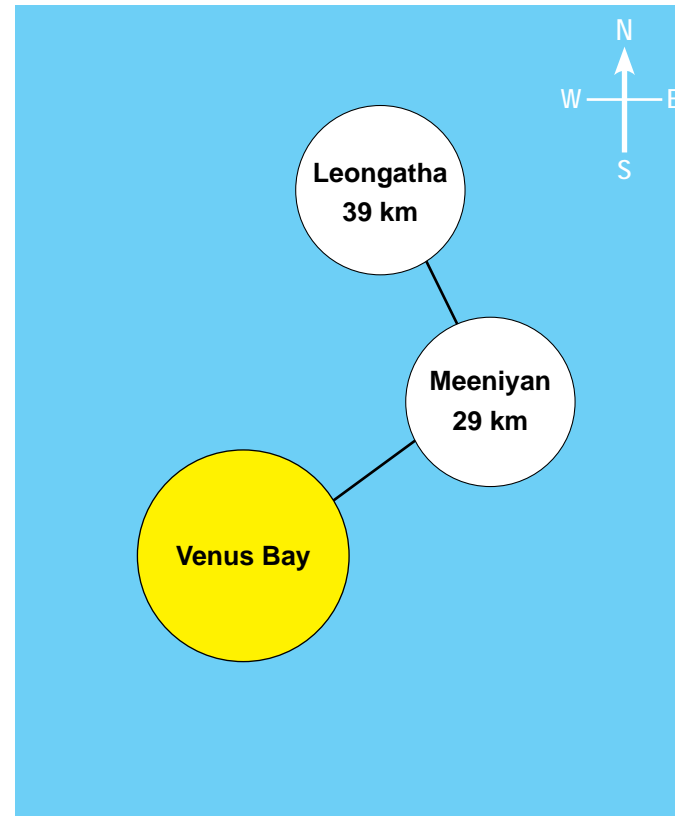


LEAVING LATE IS DANGEROUS

- Travel on roads in this area during a bushfire is dangerous
- Visibility may be poor due to smoke
- The roads may be blocked due to falling trees, accidents or emergency vehicles.

MAIN ACCESS

The main access roads in and out of Venus Bay are Evergreen Road, Canterbury Road and Lees Road.



ACTIVATE YOUR BUSHFIRE SURVIVAL PLAN EARLY

- Remember, bushfires can happen when least expected, planning and preparation are essential
- Deciding at the last minute about what to do if there is a fire may cost you your life.

COMMUNITY COMMUNICATION

Each year, the CFA offers a range of activities which can inform you on how to stay safe from a bushfire. All workshops and meetings are free of charge and open to any community member. To find an activity near you, go to www.cfa.vic.gov.au/residents/programs

FireReady Victoria Community Meeting – a short 1–1 ½ hour FireReady Victoria presentation giving an overview on local bushfire risk, advice on personal and property protection, and on personal Bushfire Survival Plans.

Community Fire Workshop – Your Town Your Plan – 2 x 2 hour workshops designed to support you with the development of your personal Bushfire Survival Plan.

Community Fireguard – small groups of residents work together over time to develop a detailed understanding of their local risks and develop their own Bushfire Survival Plans.

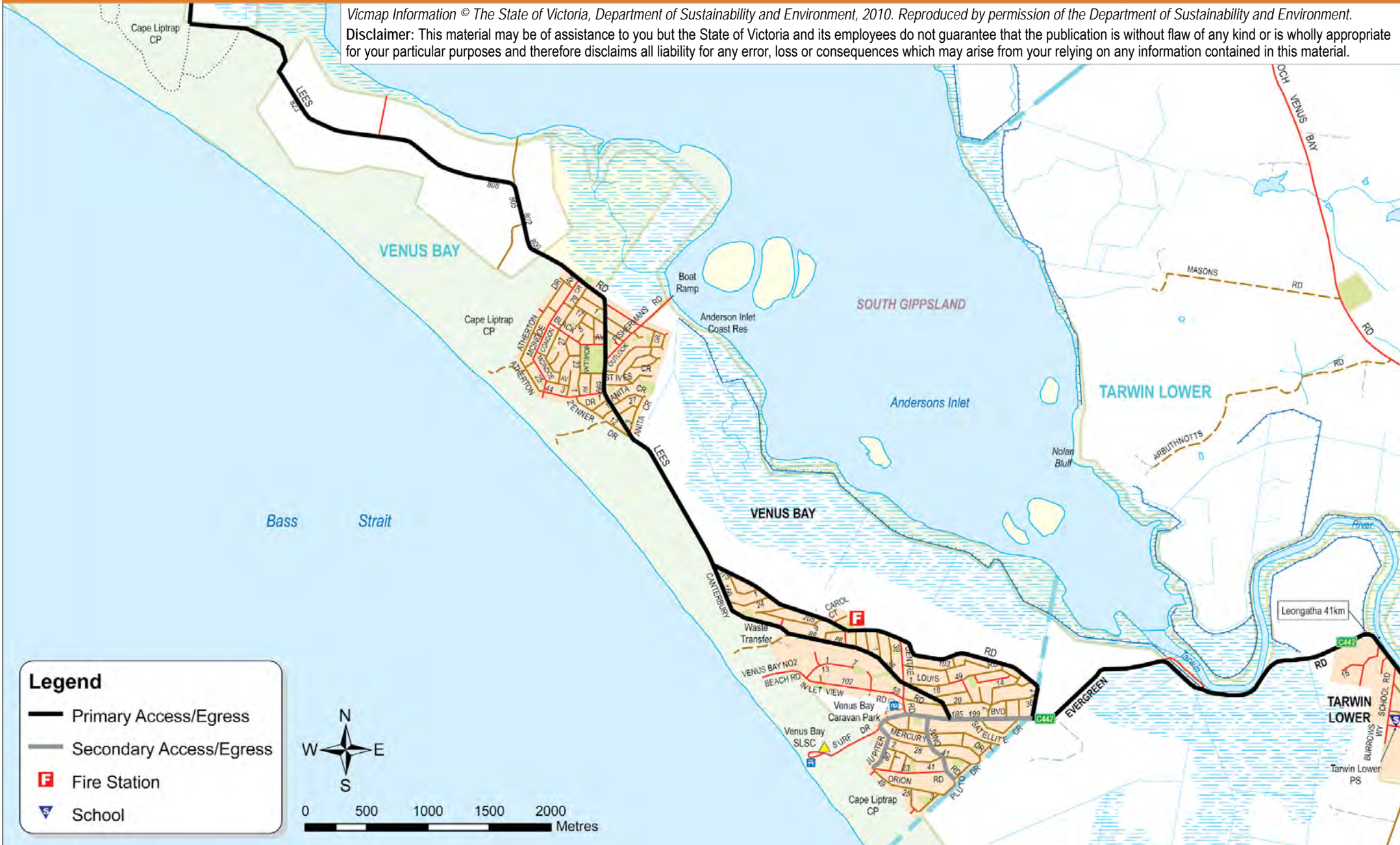
Venus Bay Community Map

2010-11 Fire Season



PREPARE. ACT. SURVIVE.
FireReady Victoria

Vicmap Information © The State of Victoria, Department of Sustainability and Environment, 2010. Reproduced by permission of the Department of Sustainability and Environment.
Disclaimer: This material may be of assistance to you but the State of Victoria and its employees do not guarantee that the publication is without flaw of any kind or is wholly appropriate for your particular purposes and therefore disclaims all liability for any error, loss or consequences which may arise from your relying on any information contained in this material.



Map last updated on November 2010